



EU-Guyana VPA Impact Monitoring Framework

JMRC

23.11.2023

Contents

Assignment methodology

FLEGT VPA Impact monitoring
Key Orientations

VPA IMF structure

IMF implementation



ASSIGNMENT METHODOLOGY

Assignment methodology

CONTEXT ANALYSIS AND WORKPLAN VALIDATION

- Launch and scoping meetings with GFC
- Literature review
- Key informant interviews

INCEPTION REPORT

Phase 1 (completed)

IMF CO-CONSTRUCTION

- Informative note disclosure
- NIWG consultation: Awareness raising workshop, technical working sessions, stakeholders' engagement workshop
- Key informant interviews

INTERMEDIARY REPORT

Phase 2 (completed)

VPA IMF presentation including complete IMF structure sent to NIWG and GTLAS members after workshops and focus groups of mission 1 and prior to validation workshop and focus groups of mission 2 by WhatsApp.

IMF VALIDATION

- GTLAS consultation: focus groups
- Key informant interviews
- NIWG validation workshop
- JMRC presentation

FINAL REPORT

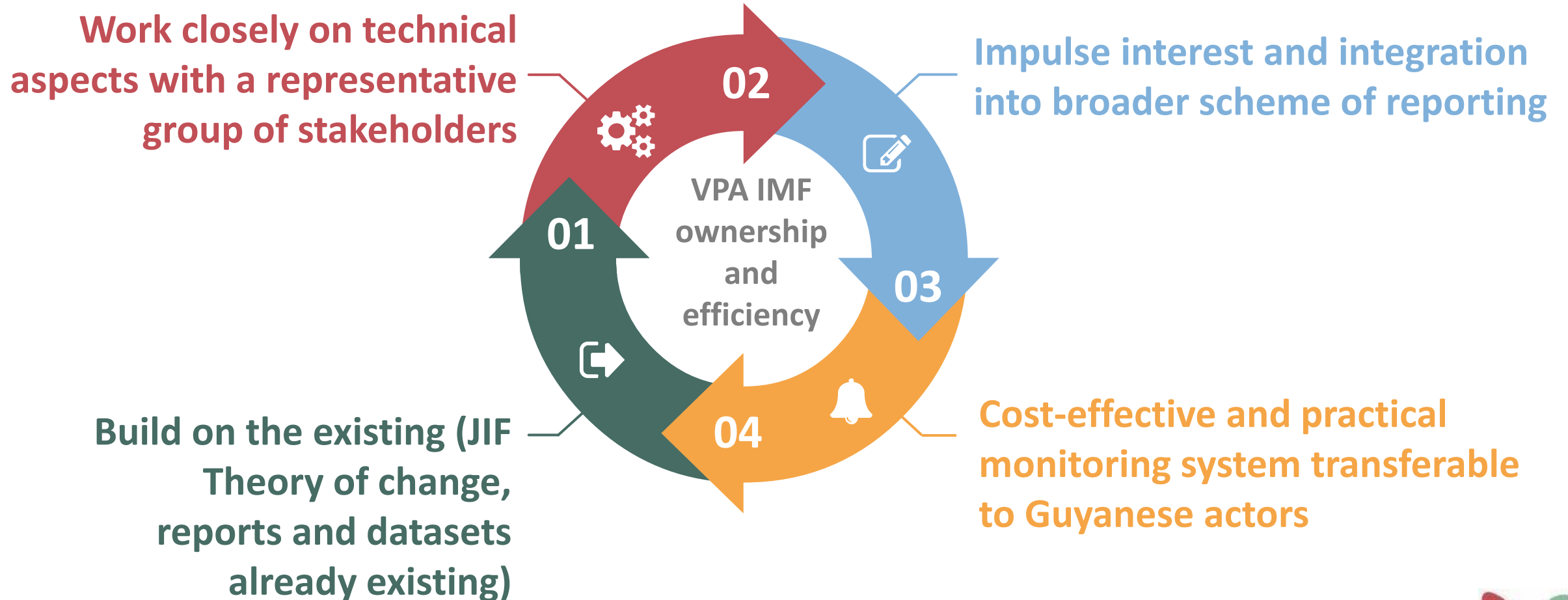
Phase 3

VPA IMF synthetic presentation including complete IMF structure sent to NIWG and GTLAS members by mail and WhatsApp prior to JMRC.

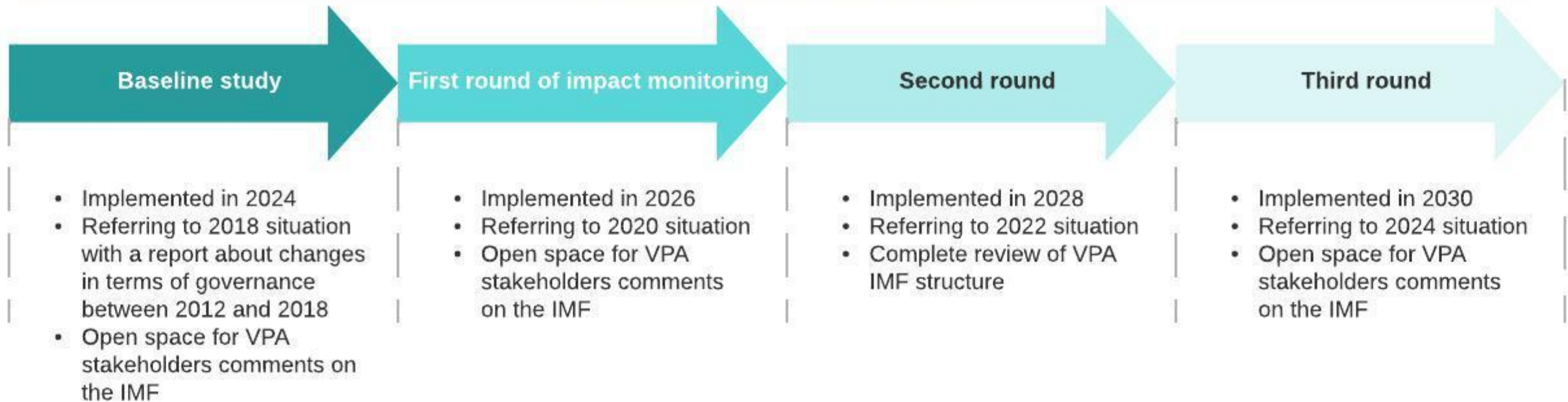


FLEGT VPA IMPACT MONITORING KEY ORIENTATIONS

VPA IMF key orientations

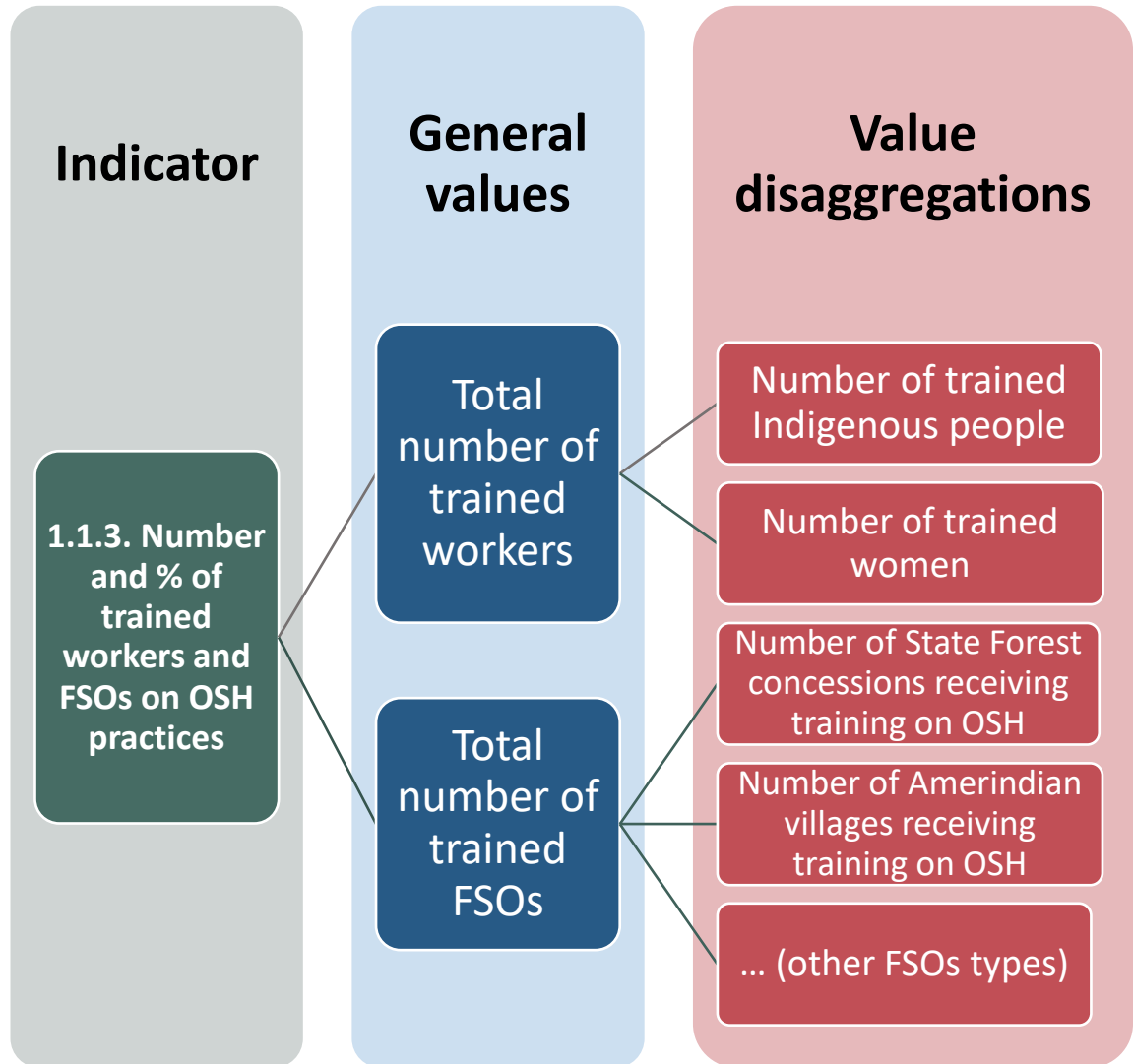


VPA Impact monitoring timeline

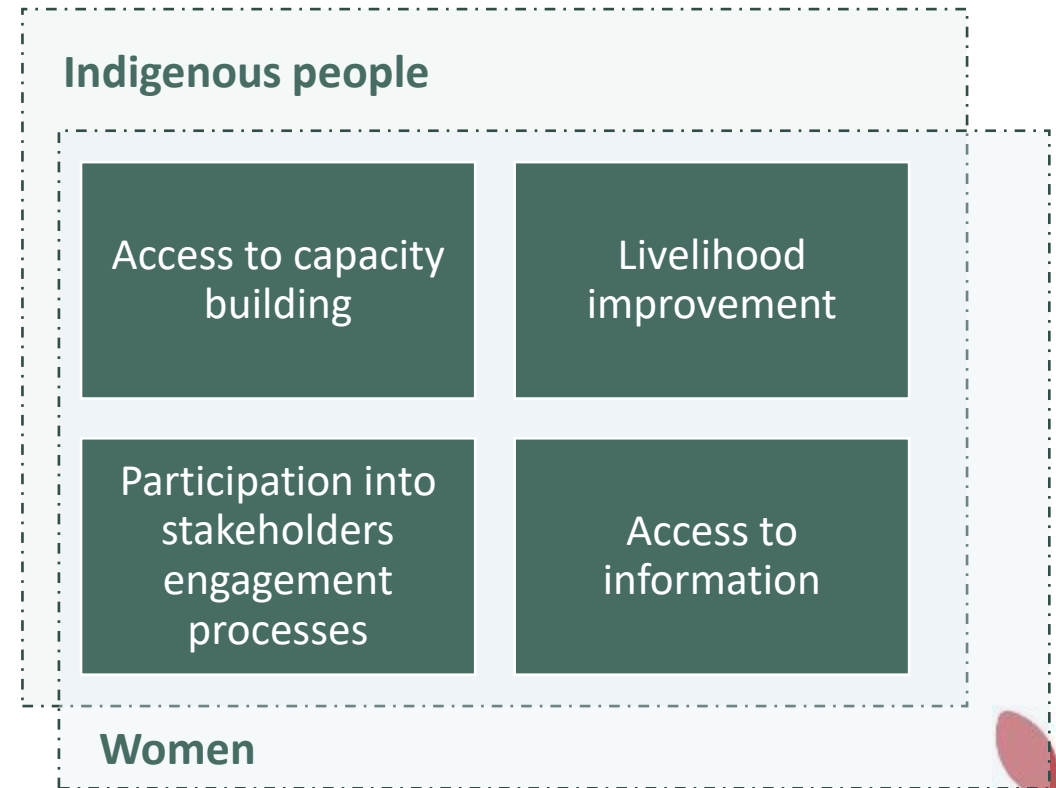


Disaggregations of indicators (social groups and FSOs types)

Example



What main aspects do we need to monitor for women and indigenous people?





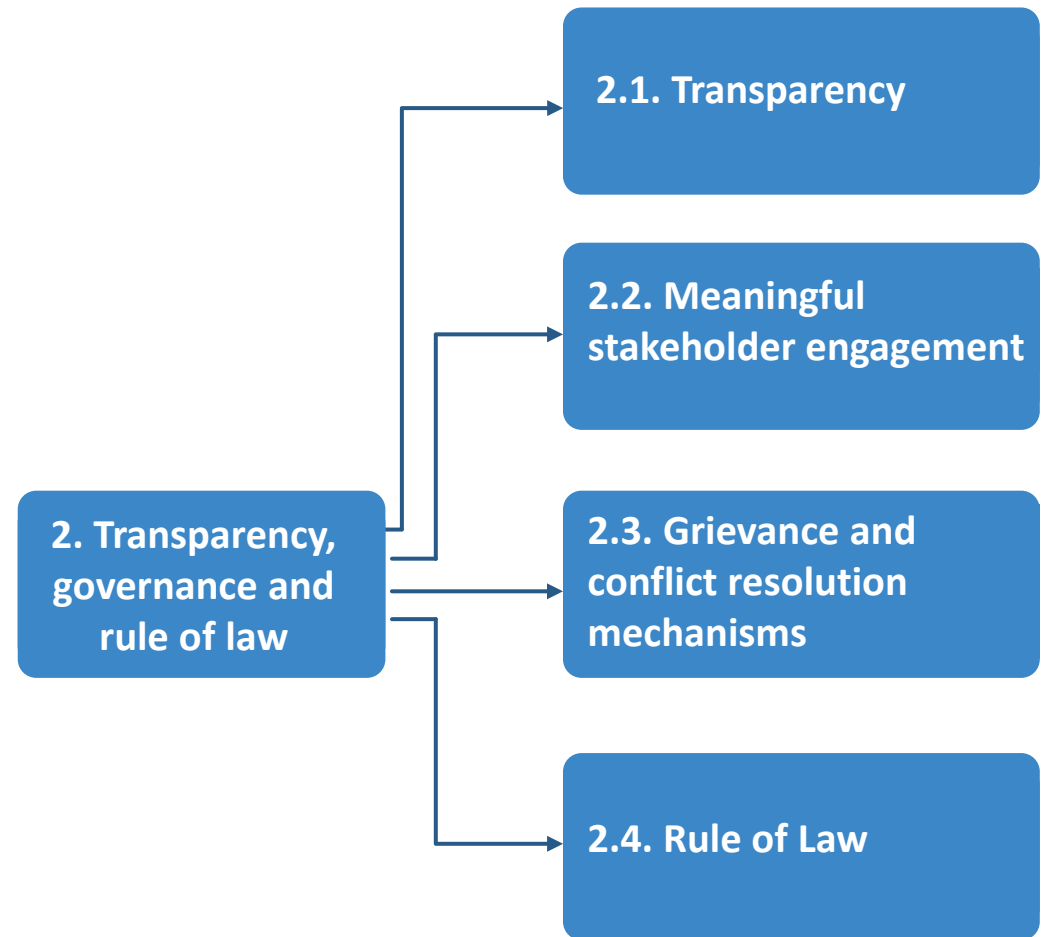
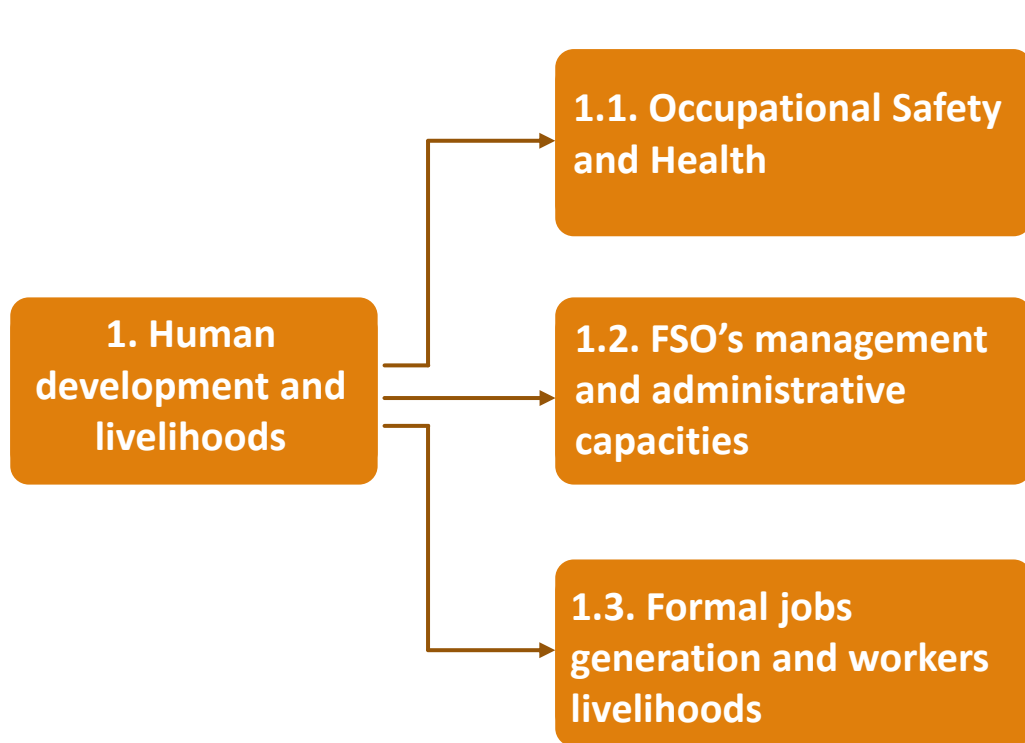
VPA IMF STRUCTURE

IMF structure

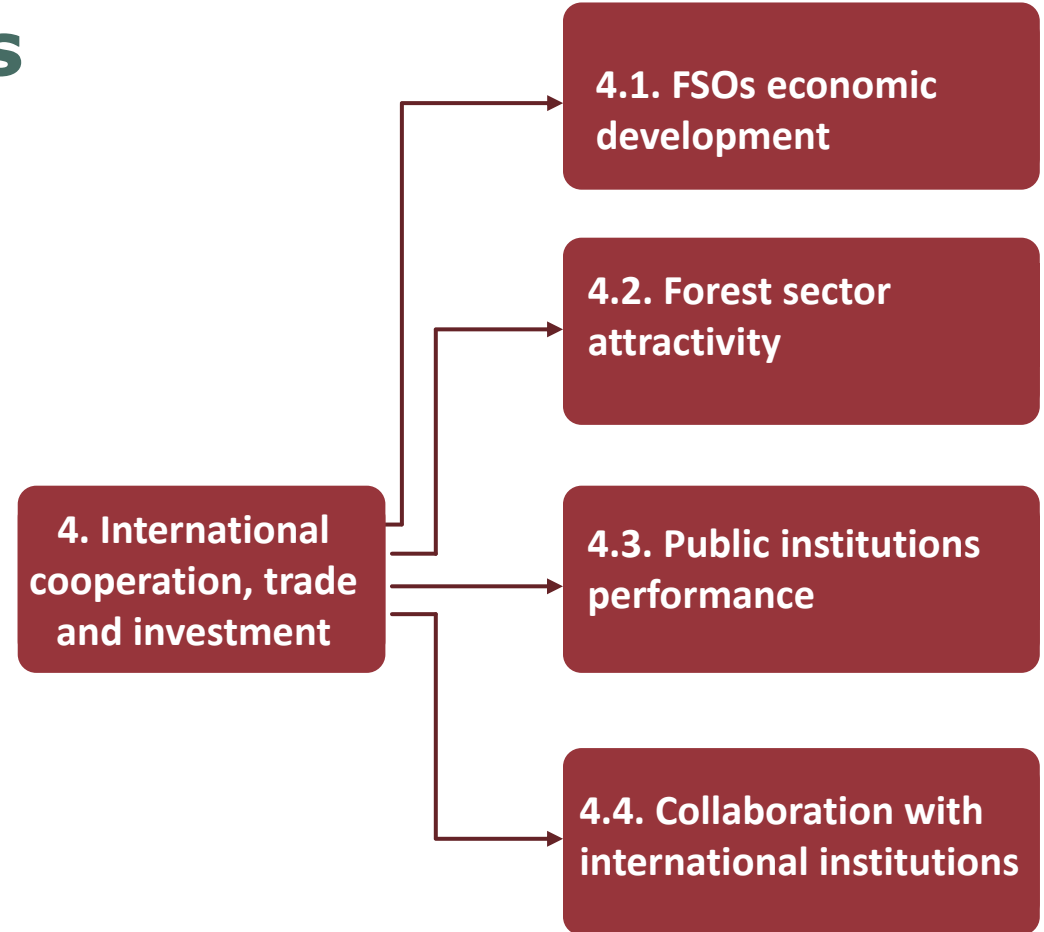
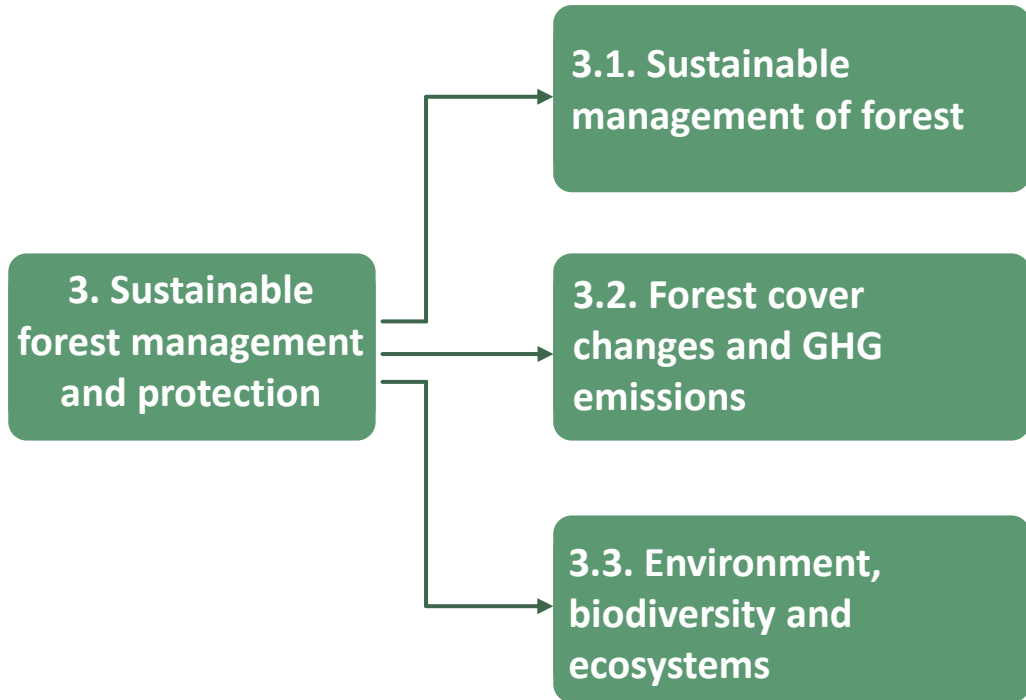
4 impact areas

14 sub impact areas

46 indicators



Impact and sub-impact areas





IMF IMPLEMENTATION

Implementation consortium and team of experts

Commissioned by the JMRC

**VPA IMF data collection and
report elaboration**

GFC focal point

Consultants' consortium

Required expertise areas:

- Data analysis
- Microeconomics
- Environment and forest management
- Stakeholders' engagement
- Livelihoods

Work plan



DATA COLLECTION

Phase 1: GFC focal point & JMRC

- Bilateral meetings between the JMRC & relevant public entities to explain the objective and establish basis of data exchange
- Data gathering and database organization

01

Month 3

Work plan



DATA ANALYSIS

Phase 2: Consultants' consortium, GFC Focal point and JMRC

- Analysis of secondary data collected
- Key informant interviews
- Complementary data collection (including field missions)
- VPA Impact Monitoring Report elaboration, review and approval by the JMRC

02

Month 10

Work plan



Phase 3: Consultants' consortium & JMRC

- Workshop with NIWG and GTLAS entities in Georgetown to present the Impact Monitoring report main results
- Elaboration of an Information Note to be translated and recorded in 9 Indigenous languages
- Creation of an audiovisual support to disclose the impact monitoring results to every VPA stakeholders



THANK YOU FOR YOUR ATTENTION